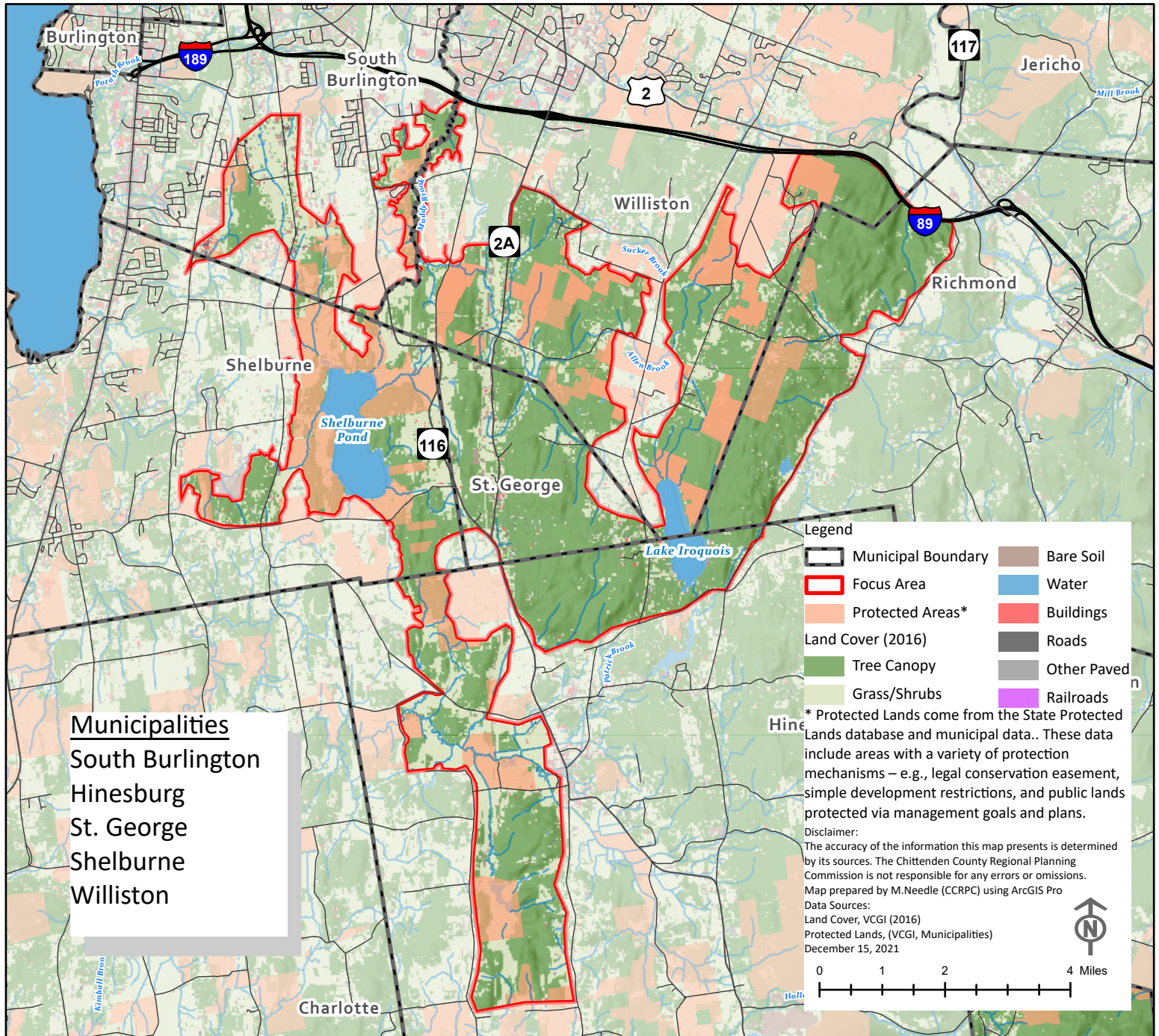


Champlain Valley Conservation Partnership

Focus Area



About the Champlain Valley Conservation Partnership:

This partnership is interested in conservation projects in all of our partnering communities, however, the partnership decided to focus efforts in an area that includes a swath of connected landscape from South Burlington’s “Great Swamp”, to Shelburne Pond, across connected habitats in St. George, into northern Hinesburg, across Muddy Brook into southwestern Williston, and even into western Richmond. This area was defined by characteristics associated with Vermont Conservation Design, and includes forest block and riparian connectivity. This work is constantly evolving, and the partnership acknowledges the focus area may change or grow over time.

Focus Area

This focus area includes ecological priorities at several scales. The overall forest pattern of connected forests and wetlands is critically important in this heavily populated and developed area of Vermont. The selected regions are focused on Highest Priority areas designated by Vermont Conservation Design for Interior Forest, Connectivity Blocks and Physical Landscape Diversity. These remaining forests are connected by a network of streams, rivers, lakes, ponds and wetlands also considered Highest Priority within Vermont Conservation Design as well as a diversity of rare threatened and endangered species and other elements. From an ecological perspective, conservation success in this region is critically important for maintaining connections between larger forests to the east down into the Champlain Valley. See <https://anr.vermont.gov/maps/biofinder> for more information on Vermont Conservation Design.